

# State of Wyoming Corner Record

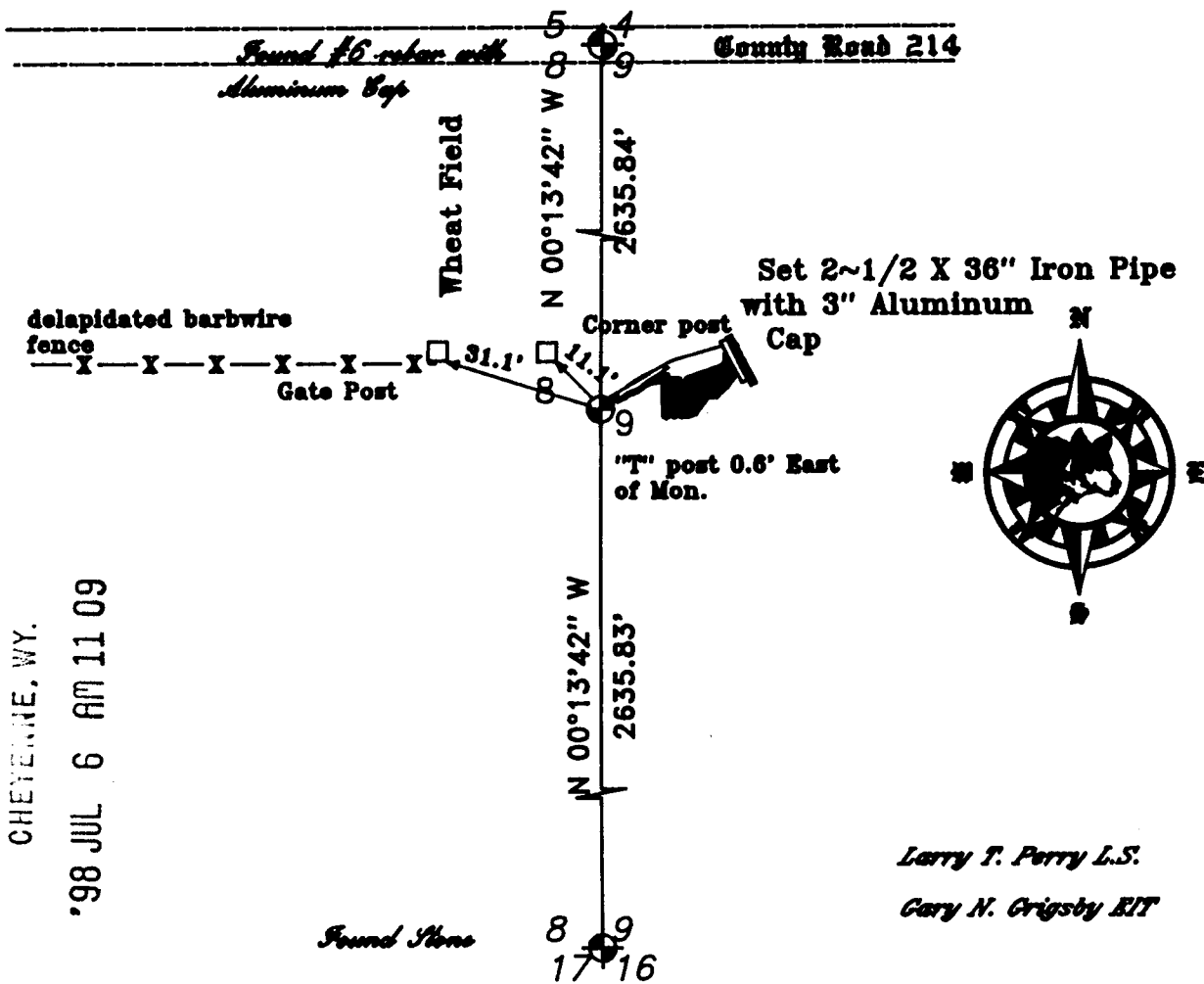
(In compliance with the CORNER PERPETUATION AND FILING ACT, Wyoming Statutes, 1977, Section 36~11~101, et, seq., and the Rules and Regulations of the Board of Registration for Professional Engineers and Professional Land Surveyors)

The Reverse side of this form may be used if more space is needed.

The record of the original survey and the citation of the source of historical information (if the corner is lost or obliterated) The description of the corner monumentation evidence as found and/or monument and accessories established to perpetuate the location of this corner. A sketch of the relative location of the monument, accessories, and reference points with course and distance to the adjacent corner(s) (if determined in this survey). The method and rationale for reestablishment of the lost or obliterated corner.

GLO: North between Sections 8 & 9, 40.00 chains set Red Sandstone 16''X6''X5'' for 1/4 Sec. Corner

Measure N 00°13'42'' W a distance of 2635.83 ft. from Sec. Corner 8/9/16/17 and set 2-1/2'' X 36'' Iron Pipe with a 3'' Aluminum Cap, thence, measure N00°13'42''W a distance of 2635.84 feet to the Sec. corner Common to Sec. 8/9/5/4 being a 3/4'' rebar with an Aluminum Cap in Co. Rd. # 214.



229047

LARAMIE COUNTY CLERK  
CHEYENNE, WY.

'98 JUL 6 AM 11 09

Larry T. Perry L.S.

Gary N. Grigsby EIT

Date of Field Work: 29 May A.D. 1998

Office Reference:

**Cross Index Diagram**

1	2	3	4	5	6	7	8	9	10	11	12	13	14	15	16	17	18	19	20	21	22	23	24	25	26	27	28	29	30
A	B	C	D	E	F	G	H	I	J	K	L	M	N	O	P	Q	R	S	T	U	V	W	X	Y	Z	AA	AB	AC	AD

**Terrestrial Surveying & Mapping Co.**

1127 Terry Ranch Road Cheyenne, Wyoming 82007

Phone: (307) 634-0300

This corner record was prepared by me or under my direct supervision.

Seal and Signature

Larry T. Perry L.S.

12 Jun 98

Corner Name : 1/4 Section: 8 - 9 T 14 N. R. 64 W. 66 P.M. Cross Index No. G~9